

National Institute of Technical Teachers' Training and Research, Bhopal

(Deemed to be University under Distinct Category)

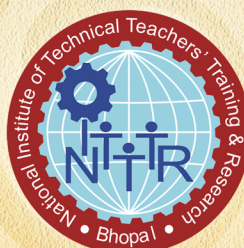
Ministry of Education, Government of India

Information Brochure 2024-2025

of

PG Programmes:

- M.Tech.
- M.Sc.
- MBA



Deemed to be University under Distinct Category

Website: www.nitttrbpl.ac.in, e-mail: director@nitttrbpl.ac.in

Phone: 0755-2661216 Fax: 0755-2661996

Table of Contents

1) About The University	2
2) Vision, Mission of the University	3
3) School of Sciences:	4
4) School of Engineering & Technology:.....	5
5) School of Management Studies	6
6) Essential Qualification for Admission to the PG Programmes	7
7) Admission Procedure	10
8) Fee Structure For PG Programmes (First Semester)	15
9) Admission Schedule.....	16
10) Stipend/Scholarship	16
11) Cancellation Of Admission & Refund Of Fee	16
12) Hostel Accommodation.....	17
13) Conduct And Discipline	17
14) Undertakings.....	18
15) Contact Details	21

Preamble

The 2-year duration PG programmes are offered for **in-service teachers, and working professionals/ industry personnel and enthusiastic learners** for capacity building and to enhance their professional skills.

The said programmes are designed to promote interdisciplinary education, hence graduates and postgraduate from different disciplines can also join the programme for capacity building in emerging areas.

The curriculum is aligned with the philosophy and requirements of NEP-2020 and NHEQF The PG programmes are designed with core of the all the courses to reflect teaching pedagogy, different learning-oriented practices, outcome assessment tools etc. The learners will have multiple options for exits after six months, 1 year with credits acquired as per NEP 2020 guidelines. The objective of the programmes is to prepare self-driven, motivated professionals with rooted social and ethical values.

These programmes have outcome-Based, learner-centric curriculum with comprehensive and balanced mix of core discipline technology and educational technology, empowering students to excel in impactful teaching, research, and service to the Industry.

These programmes have holistic and multidisciplinary educational approach that nurtures intellectual, aesthetic, social, physical, emotional, and moral capacities in an integrated manner. This will be achieved with innovative way of curriculum implementation such as Problem and Project based learning, opportunities for self-learning, providing Industry connect, assigning inter-disciplinary project, emphasis on project management and finance, concern for professional ethics, environment and society etc.

To achieve the goal of holistic and multidisciplinary education, NITTTR Bhopal is offering flexible and innovative curricula of these PG programmes, incorporating credit-based courses with an option of Multi- Entry and Exit and projects in community engagement, environmental education, and Bhartiya Knowledge System.

The normal duration of PG Engineering Programme will be of 2 academic years, (4 spells offline + 2 spell in online mode). Each offline spell will have 5 weeks contact duration in the institute. The teachers/working professionals/enthusiastic learners who have already done PG Programmes can also join the programme.

These programmes also facilitate learning through SWAYAM / NPTEL portal. For all the listed courses, if a course is available on SWAYAM or NPTEL, Students can register themselves and pass that course to earn the corresponding credits.

1) About The University:

The National Institute of Technical Teachers' Training and Research (NITTTR), Bhopal (formerly known as Technical Teachers' Training Institute, Bhopal), was established in 1965 by the Government of India as part of an ongoing scheme to enhance the quality of technical education. Initially, the institute offered short-term and long-term teacher training programs for technical educators, aiming to develop professional competence among polytechnic teachers. The objectives were incorporated in EFC Memo no. 23-24/65/T.1 of June 1966. The institute provided need-based training to improve the overall technical education system in the states of Chhattisgarh, Goa, Gujarat, Madhya Pradesh, Maharashtra, and the Union Territory of Daman, Diu, Dadra, and Nagar Haveli.

The NITTTR, Bhopal, is recognized as a centrally funded technical institution governed by the Department of Higher Education, Ministry of Education, Government of India. The Board of Governors, appointed by the Department of Higher Education (MoE), oversees the institute, representing various stakeholders, including the technical education system, industry, society, and the government. Based on recommendations from different review committees appointed by the Ministry of Education (formerly MHRD), the institute was upgraded and renamed as the "National Institute of Technical Teachers' Training and Research (NITTTR), Bhopal" in 2003 (Ministry letter no. F-7-27/2002-TS.IV dated 20 October 2003). This transformation expanded the institute's mandate, enabling it to function as a resource institution at the national and international levels for the entire spectrum of the technical education system.

The NITTTR, Bhopal, has evolved into a major resource institution and a center of excellence for the growth and expansion of the country's technical education system. It plays a crucial role in contributing to a diverse labor market beyond polytechnics and engineering colleges. The institute serves professional institutions, industry, public service organizations, vocational education, and the community at large, addressing their human resource development needs. NITTTR Bhopal has demonstrated its potential to cater to the training and development requirements of developing countries' technical education systems. Academically, it operates at the intersection of Technological, Pedagogical, and Content Knowledge areas.

NITTTR Bhopal has attained the status of a Deemed University (under the Distinct category) and is significantly contributing to implementing the National Education Policy 2020 in its true spirit. The institute is transitioning into a multidisciplinary institution of higher education, offering interdisciplinary programs that transcend traditional boundaries. All programs, courses, learning practices, and assessment mechanisms will have strong pedagogical underpinnings rooted in experiential learning, critical thinking, and problem-solving approaches. In line with NEP 2020's vision, NITTTR Bhopal aims to prepare self-driven, motivated educators with a learner-centric focus, incorporating a flexible multi-entry and multi-exit system across its diverse academic offerings.

2) Vision, Mission of the University

Vision Statement:

To be the world class leader in the integrated development of technical education and training systems, addressing evolving needs while ensuring the highest level of client satisfaction, quality, professional values and meaningful contributing to the technological, economic and social development of the country.

Mission Statements:

- Incorporate principles of leadership in capacity building in technical teachers education through its courses encompass development of faculty with diverse abilities and harnessing technology, etc.
- Provide leadership in technical teacher education that result in all technical faculty being made abreast with curriculum education.
- Intensify teacher education for improving quality and performance of technical institutions.
- Make the technical education a vibrant learning system for producing competent manpower to steer technological and economic development.
- Provide a wide spectrum of client driven services and products through various modes.
- Strengthen networking and synergic partnership with technical institutions, industries, field agencies, and premier national and international organizations.
- Promote creativity, innovations, research and development, professional management practices, concept of learning organization, benchmarking and economics of education amongst client systems.
- Enthuse the spirit of professionalism, values, and work ethics, networking, and partnership with industry and other organizations and technical institutions.

The Schools under the National Institute of Technical Teachers' Training & Research Bhopal, Deemed to be a University under a distinct category, are committed to providing a transformative educational experience aligned with NEP 2020 guidelines. It embraces a learner-centric approach with active participation. The schools are offering 2-year duration PG programmes for **in-service teachers, working professionals/ industry personnel, and enthusiastic learners** for capacity building and to enhance their professional skills.

The university comprises the following Schools:

- **School of Sciences:**
 - i. Department of Applied Science Education
- **School of Engineering & Technology:**
 - i. Department of Civil & Environmental Engineering Education
 - ii. Department of Computer Science and Engineering Education
 - iii. Department of Electrical & Electronics Engineering Education
 - iv. Department of Mechanical Engineering Education

- **School of Management Studies:**
 - i. Department of Management Education
- **School of Creative Education and Liberal Arts:**
 - i. Department of Curriculum Development and Assessment Education
 - ii. Department of Media Research and Development Education
 - iii. Department of Technical Vocational Education & Research

3) School of Sciences:

The School of Sciences is comprised of the Department of Applied Science Education, is committed to providing a transformative educational experience aligned with NEP 2020 guidelines. It embraces a learner-centric approach with active participation. School of Sciences is comprised of the following departments:

For enthusiastic learners, the School of Sciences offers interdisciplinary postgraduate programmes in

- M. Sc. Biopharmaceutical Science
- M. Sc. Mathematics (Data Science and Analytics)
- M. Sc. Physics (Semiconductor Science and Technology)

These programmes offer a flexible curriculum that transcends traditional subject boundaries and encourages learners to explore connections between different scientific disciplines, fostering a holistic understanding of knowledge. Recognizing that each learner has unique interests and aspirations, we offer a flexible curriculum. Recognition of prior learning [PRL] will be assessed and due credits will be assigned. Outcome-Based, Learner centric curriculum with comprehensive and balanced mix of core discipline technology and educational technology, empowering students to excel in impactful teaching, research, and service to the Industry.

These postgraduate programs emphasize research. Learners can probe deep into a specific area of interest, guided by experienced faculty mentors. The “master by research” model allows learners to contribute meaningfully to scientific advancements while honing their analytical and critical thinking skills through experiential learning. Learners can comprehend through discussions, case studies, hands-on experiments, and collaborative projects. Faculty bring their ongoing research projects into the classroom, exposing learners to cutting-edge developments. Problem and Project based learning, opportunities for self-learning, providing Industry connect, assigning inter-disciplinary project, emphasis on project management and finance, concern for professional ethics, environment and society etc. This approach not only enriches the learning experience but also inspires learners to pursue their own research inquiries.

3.1. Intake and Distribution of Seats (Programme-Wise)

Schools	Department	Programs with specialization	Seats	Open	OBC	SC	ST	Open EWS
School of Sciences	Applied Science Education	M. Sc. Biopharmaceutical Science	18	8	5	3	1	1
		M. Sc. Mathematics (Data Science and Analytics)	18	8	5	3	1	1
		M. Sc. Physics (Semiconductor Science and Technology)	18	8	5	3	1	1

- For all the post-graduate programs, the reservation for Persons with Disabilities (PwD) is 5% overall, as per Government of India norms. Reservation for SC/ST/OBC/EWS is as per prevailing GOI norms.
- 2 seats are reserved (over and above) for the sponsored category for 18 seats intake, however eligibility & selection process remain same as for other candidates.

4) School of Engineering & Technology:

School of Engineering and Technology aims to provide a structured framework for the effective delivery of postgraduate engineering education, ensuring academic rigor, holistic development, and professional excellence among the students. School of Engineering and Technology is to establish a comprehensive framework for the curriculum, assessment, and overall governance of postgraduate programs offered by the institute aligned to NEP 2020 guidelines. School of Engineering courses are designed as per the needs of learner and their execution/mode of delivery has been tailor made as per the requirements of the learners. Students will be offered courses from basket to earn credits as suitable for their chosen learning path of specialization.

Assessment will be carried out by NITTTR, Bhopal in offline \Online mode, either at end of semester or by on-demand examination. Recognition of prior learning [PRL] will be assessed and due credits will be assigned. Towards facilitating qualification enhancement of teachers in technical institutes who hold a Bachelor's degree in their respective disciplines, the institute designed and developed a new path breaking system. By upholding the principles of academic integrity, equity, and inclusive, NITTTR Bhopal provides a conducive environment for professional growth of postgraduate engineering students, equipping them with the necessary skills, knowledge, and ethical values to excel in their chosen fields and contribute meaningfully to the advancement of knowledge and societal well-being in the field of teaching, industry and research.

School of Engineering and Technology comprises the following departments:

1. Department of Civil & Environmental Engineering Education
2. Department of Computer Science and Engineering Education
3. Department of Electrical & Electronics Engineering Education
4. Department of Mechanical Engineering Education

Each department is offering multi-disciplinary programmes according to the curriculum drawn by the faculty. The assessments of a course are in alignment with the course learning outcomes. The PG Engineering programmes are coined in the multi-disciplinary domain for knowledge creation among the students. The PG engineering programs will be very much helpful in enhancing the capabilities of in-service teachers and industry persons, in addition to enthusiastic learners, for creating a new era in higher education in the country.

4.1. AICTE Approved Intake and Distribution of Seats (Programme-Wise)

Schools	Department	Programs with specialization	Seats	Open	OBC	SC	ST	Open EWS
School of Engineering and Technology	Civil & Environmental Engineering Education	M. Tech. in Transportation Engineering & Management	18	8	5	3	1	1
	Computer Science and Engineering Education	M. Tech. in Computer Science and Engineering (Bigdata Analytics)	18	8	5	3	1	1
	Electrical & Electronics Engineering Education	M. Tech. in Green Technology	18	8	5	3	1	1
		M. Tech. in VLSI & Microelectronics	18	8	5	3	1	1
	Mechanical Engineering Education	M. Tech. in Computer Aided Design Manufacture and Automation	18	8	5	3	1	1

- For all the post-graduate programs, the reservation for Persons with Disabilities (PwD) is 5% overall, as per Government of India norms. Reservation for SC/ST/OBC/EWS is as per prevailing GOI norms.
- 2 seats are reserved (over and above) for the sponsored category for 18 seats intake, however eligibility & selection process remain same as for other candidates.

5) School of Management Studies

The School of Management Studies at NITTTR Bhopal provides a transformative educational experience. Our mission is to prepare learners to excel in the dynamic and intricate world of business while nurturing future leaders, entrepreneurs, and scholars who can make meaningful contributions to society. The school fosters a culture of innovation, collaboration, and ethical leadership, challenging students to think critically, creatively, and responsibly.

Within the School of Management Studies, the Department of Management Education offers a comprehensive range of programs. These include an **MBA in Public Policy and Management**, emphasizing leadership and policy analysis, as well as a **Ph.D. in Management**. These programs cater to both aspiring professionals and scholars, equipping them with the necessary knowledge and skills.

Additionally, the school is poised for growth, with plans to introduce two new departments: **Economics** and **Entrepreneurship**. These upcoming departments will further enhance our commitment to excellence in education, research, and community engagement. The domain of Public Policy and Management is undergoing a transformative shift driven by the rapid pace of digital innovation. This field now encompasses careers that harness the power of technology and data to formulate, implement, and evaluate policies and strategies for effective governance and public service delivery. Professionals in this domain acquire interdisciplinary skills in areas such as digital policy analysis, e-governance, data analytics, and digital transformation management, enabling them to navigate the complexities of policymaking in an increasingly digitized world. With a deep understanding of the interplay between policy, technology, and societal dynamics, these professionals play a crucial role in promoting digital inclusion, enhancing transparency and accountability, and leveraging emerging technologies to address complex societal challenges. As governments and organizations embrace digital transformation, the demand for expertise in developing and executing digitally-enabled public policies and strategies has surged, opening up new career avenues for those equipped with the necessary skills and knowledge.

The goal of NITTTR Bhopal's two-year, modular, hybrid MBA in Public Policy and Management (MBA-PPM) program is to enhance prospective managers' and administrators' efficacy, leadership, and management skills. This program aims to provide students with this unique combination to play a significant role in driving changes to policies and instigating new ones in their professions. MBA-PPM is designed for people who hope to work in positions involving public policy and management in the future. Today, more than ever, the success of organizations depends on mission-mode approaches, public goals, and team-driven methods to deliver public services.

5.1 Approved Intake and Distribution of Seats (Programme-Wise)

Schools	Department	Programmes	Seats	Open	OBC	SC	ST	Open EWS
School of Management Studies	Management Education	Master of Business Administration (Public Policy and Management)	30	14	8	5	2	1

Note:

- For all the post-graduate programs, the reservation for Persons with Disabilities (PwD) is 5% overall, as per Government of India norms. Reservation for SC/ST/OBC/EWS is as per prevailing GOI norms.
- 5 seats are reserved (over and above) sanctioned seats of 30 candidates, however, the eligibility & selection process remains the same as for other candidates.

6) Essential Qualification for Admission to the PG Programmes

6.1 Essential Qualifications

Schools	Department	Programs with specialization	Seats	Essential Qualifications*
School of Sciences	Applied Science Education	M. Sc. Biopharmaceutical Science	18	B.Sc. with a Major in Chemistry, B. Sc Maths/Biology/Microbiology/Biochemistry/ Biotech/ B. Pharma/B. Tech (Chemical, Biotech)
		M. Sc. Mathematics (Data Science and Analytics)	18	Graduation (BSc in Physics, Mathematics and Chemistry/ Computer Science/ Electronics/ Statistics or BSc (Hons)/B. A Hons (Major in Maths)/ B. Tech in any discipline/ B. Com with Maths/BCA
		M. Sc. Physics (Semiconductor Science and Technology)	18	Graduation (BSc with Physics, Mathematics and Chemistry/Computer science/ Electronics/ Statistics or BSc Physics (Hons) / B Tech (Electronics and communication)
School of Engineering and Technology	Civil & Environmental Engineering Education	M. Tech. in Transportation Engineering & Management	18	B.E./B. Tech./ equivalent in Civil Engineering and Allied Disciplines OR B.E./B. Tech equivalent Mechanical/Electrical Engineering and Allied Disciplines With Minor In Civil Engineering OR B .E./B. Tech./ equivalent in any Engineering disciplines and studied following courses. i. Highway/Traffic/Railway Engineering ii. Surveying/Gis/Remote Sensing iii. Strength of Materials
	Computer Science and Engineering Education	M. Tech. in Computer Science and Engineering (Bigdata Analytics)	18	UG engineering degree in CSE, IT, electrical, electronics, and other allied disciplines or MCA/M. Sc. In CS/IT
	Electrical & Electronics Engineering Education	M. Tech. in Green Technology	18	B.Tech /B.E in Electrical and Electronics Engineering discipline and allied branches/Electronics and Communication Engineering discipline and allied branches /

Schools	Department	Programs with specialization	Seats	Essential Qualifications*
				Mechanical Engineering discipline and allied branches
		M. Tech. in VLSI & Microelectronics	18	B.Tech/B.E. in Electronics Engineering and allied Disciplines, M. Sc. [Physics/Electronics/Computer Science]/B.Sc Hons with Physics/Electronics
	Mechanical Engineering Education	M. Tech. in Computer Aided Design Manufacture and Automation	18	Graduates in B.E. / B.Tech. in Mechanical Engineering and allied areas and equivalent engineering degree/ B. Tech in instrumentation and Control/Robotics/Electronics/Electrical
School of Management Studies	Management Education	Master of Business Administration (Public Policy and Management)	30	Graduates from all streams B.Tech/ B.Sc / B.A. / B.B.A / B Com/BCA

*To bring the learners from different disciplines at par the foundation course will be offered in first semester to cope-up with course curriculum in subsequent semester of the programme.

7) Admission Procedure

7.1 Essential Qualification for admission to the PG Programmes

Essential qualification for admissions in PG Programmes of NITTTR, Bhopal is as per Table 4.

Table-4: Essential Qualifications

Schools	Department	Programmes with specialization	Seats	Essential Qualifications*
School of Sciences	Applied Science Education	M. Sc. Biopharmaceutical Science	18	B.Sc. with a Major in Chemistry, B. Sc Biology/ Microbiology/ Biochemistry/ Biotech/ B. Pharma/B. Tech (Chemical, Biotech)
		M. Sc. Mathematics (Data Science and Analytics)	18	Graduation (BSc in Physics, Mathematics and Chemistry/ Computer Science/ Electronics/ Statistics or BSc (Hons)/B. A Hons (Major in Maths)/ B. Tech in any discipline/ B. Com with Maths/BCA
		M. Sc. Physics (Semiconductor Science and Technology)	18	Graduation (BSc with Physics, Mathematics and Chemistry/Computer science/ Electronics/ Statistics or BSc Physics (Hons) / B Tech (Electronics and communication)
School of Engineering and Technology	Civil & Environmental Engineering Education	M. Tech. in Transportation Engineering & Management	18	B.E./B. Tech./ equivalent in Civil Engineering and Allied Disciplines OR B.E./B. Tech equivalent Mechanical/Electrical Engineering and Allied Disciplines With Minor In Civil Engineering OR B .E./B. Tech./ equivalent in any Engineering disciplines and studied following courses. iv. Highway/Traffic/Railway Engineering v. Surveying/Gis/Remote Sensing vi. Strength of Materials
	Computer Science and	M. Tech. in Computer Science	18	UG engineering degree in CSE, IT, electrical, electronics, and other

Schools	Department	Programmes with specialization	Seats	Essential Qualifications*
	Engineering Education	and Engineering (Bigdata Analytics)		allied disciplines or MCA/M. Sc. In CS/IT
	Electrical & Electronics Engineering Education	M. Tech. in Green Technology	18	B.Tech /B.E in Electrical and Electronics Engineering discipline and allied branches/Electronics and Communication Engineering discipline and allied branches / Mechanical Engineering discipline and allied branches
		M. Tech. in VLSI & Microelectronics	18	B.Tech/B.E. in Electronics Engineering and allied Disciplines, M. Sc. [Physics/Electronics/Computer Science]/B.Sc Hons with Physics/Electronics
	Mechanical Engineering Education	M. Tech. in Computer Aided Design Manufacture and Automation	18	Graduates in B.E. / B.Tech. in Mechanical Engineering and allied areas and equivalent engineering degree/ B. Tech in instrumentation and Control/Robotics/Electronics/Electrical
School of Management Studies	Management Education	Master of Business Administration (Public Policy and Management)	30	Graduates from all streams B.Tech/ B.Sc / B.A. / B.B.A / B Com/BCA

*To bring the learners from different disciplines at par the foundation course will be offered in first semester to cope-up with course curriculum in subsequent semester of the programme.

7.2 Admission Procedure

The University offers a variety of interdisciplinary postgraduate programmes across various Schools. These programmes are designed for working professionals from academia, industry, research institutions, and enthusiastic learners.

Criteria 1

Candidates, who have qualified for national-level eligibility tests/ similar tests such as NET/ GATE/GPAT/ JAM etc. will be exempted from any other criteria and will be preferred over the others for admission merit. In case of remaining vacant seats criteria 2 will be followed.

Criteria 2

Candidates, who have appeared for any national level eligibility test/ similar tests such as NET/ GATE/GPAT/ JAM and have scorecard only/without any scorecard merit list will be prepared according to the following table.

Criteria 2

Schools	Criteria for Admission and Preparation of Merit list*
School of Sciences	<ul style="list-style-type: none"> i. 50% weightage of the score of national level eligibility test/ similar tests such as NET/ GATE/GPAT/ JAM scorecard ii. 30% weightage will be given to experienced candidates having a maximum of 3 years of experience @10 marks for each year of experience[#] iii. 20% weightage will be given to the qualifying exams as per eligibility criteria
School of Engineering and Technology	<ul style="list-style-type: none"> i. 50% weightage of the score of national level eligibility test/ similar tests such as GATE/NET scorecard ii. 30% weightage will be given to experienced candidates having a maximum of 3 years of experience[#] iii. 20% weightage will be given to the qualifying exams as per eligibility criteria
School of Management Studies	<ul style="list-style-type: none"> i. 50% weightage of the score of national level eligibility test/ similar tests such as CAT/GMAT/XAT scorecard ii. 15% weightage will be given to experienced candidates having a maximum of 3 years of experience[#] iii. 10% weightage will be given to the qualifying exams as per eligibility criteria iv. 25% weightage will be given to Personal Interview

*For the sponsored candidates the criteria of merit will remain the same.

*For those **who have not appeared** in respective eligibility test (listed above) will be evaluated based on remaining weightage

Minimum one year Experience required, Only completed years will be counted on the last date of application form submission, 10 marks for each year of experience

All the applicants are advised to submit the scorecard of a national-level entrance test relevant to the chosen programme with duly filled application form.

7.3 Application Process

- All applicants must complete and submit the online application form available on the University website.
- The completed application form, along with all required documents (including the relevant entrance test scorecard, transcripts, and work experience certificates if applicable), should be submitted by the application deadline.

7.4 Selection Process

Selection for admission will be based on a combination of factors, which may include:

- Entrance exam scores (if applicable)
- Work experience (if applicable)
- Academic transcripts
- Statement of purpose (if required)
- Interview performance (if required)

Specific details regarding the weightage assigned to each factor as above and the selection process will be available on the program page of the University website.

7.5 Key Features of the PG Programmes Offered by the Institute

Programme Duration: The normal duration of PG Engineering Programme will be of 2 academic years consisting of 4 spells offline (i.e on-campus sessions) and 2 spells in online sessions. Each offline spell will last 5 weeks.

Open to Diverse Learners: The teachers, working professionals, enthusiastic learners who have already done postgraduation are also welcome to join the programmes.

- **Learner-centric and Flexible (Light but Tight):** These programmes are designed with a learner-centric approach, emphasizing flexibility. The curriculum offers multiple exit option and re-entry possibilities. The programme combines various offline and online spells, providing a blended learning experience. Assessments are rigorous to ensure strong learning outcomes, and a rubric-based approach is used to evaluate learner performance and credit allocation.
- **Exit Option:** Learners may choose to exit the program at different points:
 - i. **After earning 40 credits:** After completing the first two offline (on-campus) sessions and one online spell, learner may choose to exit the programme with one month prior notice. To earn a PG Diploma, they will need to complete an additional 4-credits exit course. Upon successful completion, they will be awarded a PG Diploma in the relevant engineering programme (or a PG Diploma in Management for the MBA programme).
 - ii. **After earning 20 credits:** After completing the first (initial) one offline (on-campus) and one online spell, learner may exit the programme with one month prior notice. They will receive a Certificate of Completion acknowledging their earned 20 credits, which can be accumulated towards future programme completion.

- **Re-entry:** It refers to the possibility for learners to rejoin the programme they were originally admitted to. This will be governed by the provisions outlined in NEP 2020. Learners can seek readmission within two years of their initial in same PG programme

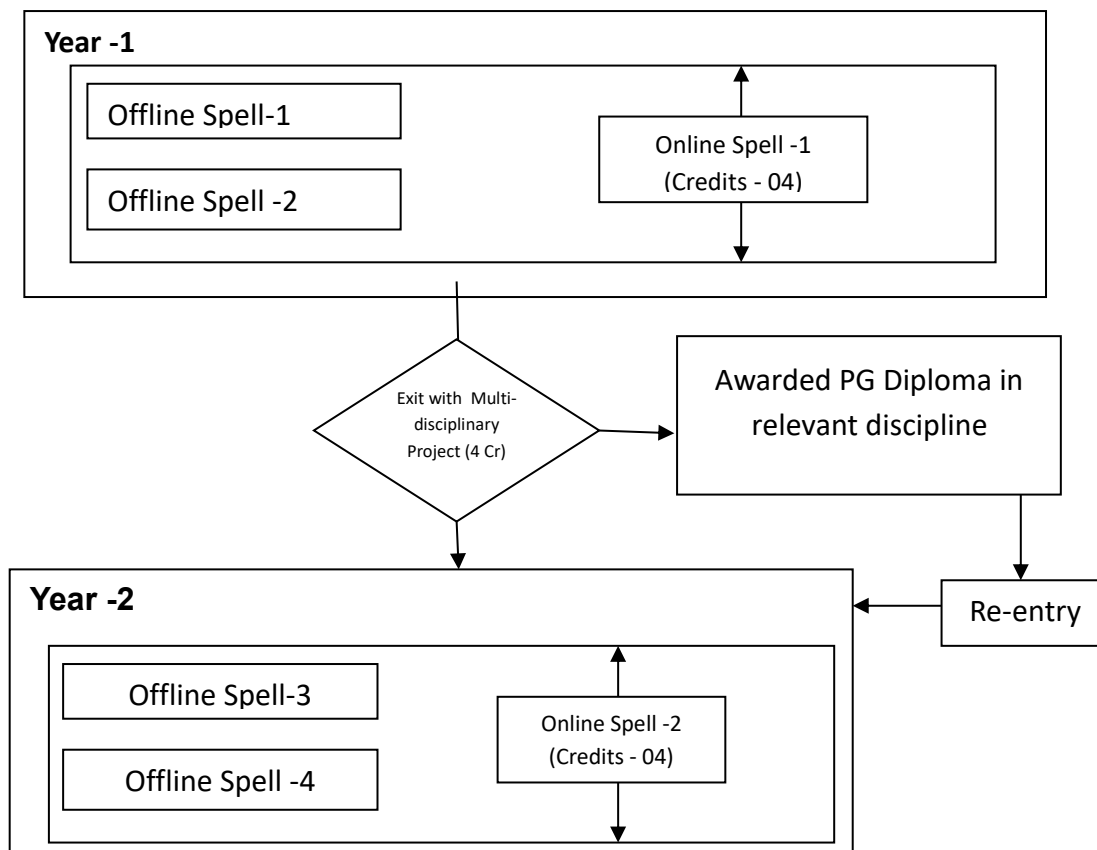


Figure -1: Structure of the PG Programme

- **Recognition of Prior Learning:** The program recognizes prior learning experience under the provisions of the National Skills Qualification Framework (NSQF). Learners working in relevant fields within industry, academia, or research organizations may be eligible for RPL. A designated committee will assess the learner's prior learning experience to determine the applicability of exemptions for specific courses within the programme. Based on the assessment, a certain number of credits may be awarded towards the learner's programme completion.

Process: Learners interested in RPL should consult the programme coordinator for details on the application process and assessment procedures.

Benefits: RPL can reduce the overall program duration for eligible learners. It acknowledges and values the knowledge and skills gained through prior work experience.

8) Fee Structure For PG Programmes (First Semester)

S. No.	Description	M.Tech./M.Sc./MBA	Payable
1.	Tuition Fees	32,000 /-	Per Semester
		50,000/- For Sponsored Candidates	
2.	Student Welfare Fund	600/-	
3.	Student Medical Fund	400/-	
4.	Institute Development Fund	2500/-	
5.	Student Activity fee	1000/-	
6.	Library Fee	1000/-	
7.	Registration & Examination Fee	3000/-	
8.	Central Computing Facilities, Internet Fee	1500/-	
Fee at the time of Admission- Non Refundable			
9.	Academic Fee (Including Degree, Migration, Character, ID card)	2000/-	One time
10.	Field Visit/Industry Immersion Programme	3000/-	
11.	Convocation fee	2000/-	
12.	Alumni fee	1000/-	
13.	Student insurance Fee.	300/- Per annum	
Fee at the time of Admission- Refundable			
14.	Caution money	5000/-	One time

8.1 Fee Details: (Semester Wise)

The admitted student has to deposit the semester fees through the institute web portal/payment gateway.

PG Programme	Fee Semester Wise			
	First Semester (at the time of admission)	Second Semester	Third Semester	Fourth Semester
M. Tech./M.Sc./MBA	Rs. 55,300/-	Rs. 42,000/-	Rs. 42,300/-	Rs. 42,000/-

In addition to the above-mentioned fee, hostel lodging, and boarding charges must be deposited by the candidate as per the norms before the start of the semester.

9) Admission Schedule

The admission Schedule will be posted on the Institute's website. Candidates are advised to check the website (www.nitttrbpl.ac.in) regularly for updates.

10) Stipend/Scholarship

Candidates admitted to M. Tech/ M.Sc./MBA programs with valid scorecards/ fellowships are eligible to receive a stipend/scholarship as per Govt. of India norms, subject to rules and regulations applicable from time to time.

11) Cancellation Of Admission & Refund Of Fee

- 11.1 If at any stage, it is found that a candidate has been admitted in any course based on false or incorrect information or by hiding relevant facts or if at any time after admission, it is found that the admission was given to the candidate due to some mistake or oversight or humanitarian negligence, the admission granted to such a candidate, shall liable to be canceled forthwith, without any notice at any time during the course of his/her studies, by the competent authority.
- 11.2 The Institute follows the AICTE/UGC rules for refund of fees.
- 11.3 If the reserved seats remain vacant, they will be considered for open seats. However, on the last admission date, any reserved category candidate reports He/She will be preferred subjected to eligibility.
- 11.4 In case of any dispute, all rights are reserved by the admission committee/Head of the institute.

12) Hostel Accommodation

Hostel accommodation is available based on the merit of admission to the candidates. Preference will be given to outstation candidates. If the accommodation is further available, the local candidates may also be considered for hostel accommodation.

12.1 Hostel Fee Details:

S. No	Room Category	Fee Per Semester	Remark
1.	Single Occupancy Non-AC (per person)	6000/-	Subjected to the availability
2.	Double Occupancy Non-AC (per person)	4000/-	
3.	Single Occupancy AC with attached toilet	72000/-	
4.	Double Occupancy AC with attached toilet (per person)	40000/-	
5.	Hostel Maintenance Fee (Electricity, Water, Sanitation)	10,500/-	

In Modular mode of 4-6 weeks offline spell, the hostel fee for candidates will be charged as per the institute norms applicable for Student participants.

13) Conduct And Discipline

- 13.1 Students studying in the Institute who are found indulging in anti-national activities contrary to the provisions of acts and laws enforced by the Government or in any activity contrary to rules of discipline will be expelled by the Director of the Institute on the recommendation of the proctor/proctorial board without any notice.
- 13.2 Ragging in any form is strictly prohibited and considered a serious criminal offense and violation of the code of conduct. A student's involvement in ragging may lead to his/her expulsion from the Institute.
- 13.3 AICTE has published a notification vide F.No.37-3/Legal/AICTE/2009 dated 1.7.2009 regarding the prevention and prohibition of ragging in technical institutions. As per the said circular, which is available on its website <http://www.aicte-india.org/anti>., an affidavit on stamp paper of ₹10/—in this regard must be submitted separately by the student and their guardian at the time of admission in the prescribed proforma.

14) Undertakings

If admission is offered to the M.Tech/ M. Sc./ MBA programme, the candidate will have to give the following undertakings.

CANDIDATES WHOSE QUALIFYING EXAMINATION RESULTS ARE NOT DECLARED

I understand that I have been admitted to the I Sem M.Tech/ M. Sc./ MBA in branch on a provisional basis. My admission will be confirmed only after I produce my passing certificate and the mark sheet of the qualifying degree examination from the concerned University immediately after the result is declared.

Place: Signature of the Candidate

Date: Name of the Candidate

Candidates For Scholarship

I understand that I have been admitted to the M.Tech/ M. Sc./ MBA programme in..... and I am eligible to get PG scholarship. However, due to non-receipt of grants from various schemes of Govt. of India. If the scholarship disbursement is delayed, I will not hold the Institute responsible for the same.

Place: Signature of the Candidate

Date: Name of the Candidate

FOR SPONSORED CANDIDATES

SELF DECLARATION

I understand that I have been admitted to the M Tech./M. Sc./ MBA programme in..... and I am prepared to undergo this programme and bear all the expenses including the prescribed fees and those related to project work and dissertation.

I further understand that I shall not be permitted to leave the programme midway and during the entire tenure of this programme. In case of the default, I know that my admission can also be cancelled.

Place: Signature of the Candidate

Date: Name of the Candidate

Employers Certificate for Sponsored Candidates

This is to certify that Mr. / Ms. (Father's/Husband name) is working in (Name & address of Employer/ Organization/Institute) as..... on Regular /Full time basis and he / she is sponsored and permitted to join the Full time M.Tech in.....of NITTTR, Bhopal. If selected as a sponsored candidate the organization has no objection and he/she will be allowed to continue full time M.Tech/ M. Sc./ MBA Programme till the stipulated time period of the programme at NITTTR, Bhopal.

Place: Signature of Competent Authority

Date: with official seal

Self Declaration by all candidates admitted to M.Tech/ M. Sc./ MBA programmes

I agree to abide by the rules of conduct and discipline of the Institute and rules of conduct and discipline of the hostels. In case of any infringement of rules or violation of any laws of the land, I can be sent back home at my own cost. I agree that in case of any legal dispute concerning admission, the same will be subject of the exclusive jurisdiction of court at Bhopal only.

Signature of Applicant: _____

Date: _____ Place: _____

All Candidates Admitted to Ist year PG programmes are required to give the following undertaking on non-judicial stamp paper of ₹ 10/-

I.....(Name of the Candidate) Son / Daughter of herewith undertake that

- i. I shall abide by the rules & regulations of the university ordinance for the current year (and as may be amended from time to time) and are acceptable to me.
- ii. The information given by me in my application is true to the best of my knowledge and belief.
- iii. I shall deposit the semester fee on time.
- iv. I have not been debarred from appearing at any examination held by any Government constituted or statutory examination authority in India.
- v. I shall not be taking admission in any other course without the due cancellation of admission at this institute.
- vi. I fully understand that the offer of a program will be made to me depending on merit and availability of a seat at the time of scrutiny of my application when I will report to the admission authority according to the schedule of admission.
- vii. I hereby agree to conform to any rules, acts and laws enforced by Government and I hereby undertake that so long as I am a student of the Institute, I will do nothing either inside or outside the institute, which may result in disciplinary action against me under the rules, acts and laws.
- viii. I understand that no other document, other than those attached to the application form before the last date of admission will be entertained for the purpose of claims/concessions etc. in connection with my admission.
- ix. I understand that no refund of fee shall be made if I cancel the admission after commencement of the classes and if the seat due to cancellation is not filled.
- x. I fully understand that the Director of the Institute where I would be admitted, will have right to expel/rusticate me from the Institute for any infringement of the rules of conduct and discipline prescribed by the University and undertaking given above.
- xi. I understand that the programme being a full time 2-year program, I shall not pursue any other educational degree programme / and not involve in any form of employment, failing which my admission stands cancelled. (applicable to Category I and II only)
- xii. I will not involve directly or indirectly in any unlawful, un social, unethical activity and ragging activity.

Place: Signature of the Candidate

Date: Name of the Candidate

15) Contact Details

Admission Office: 0755-2661600-602 Ext. 448, E-mail: admission@nitttrbpl.ac.in

Contact Numbers and Email-ID

S. No.	Name and Designation	Contact Numbers and Email ID
1.	Dr. Sanjay Agarwal Dean Academic Research	0755-2661600-602 Ext. 393 sagrawal@nitttrbpl.ac.in
2.	Prof. Manish Bhargava Coordinator Admission Cell	0755-2661600-602 Ext. 438 mbhargava@nitttrbpl.ac.in
3.	Dr. Deepak Singh Member Admission Cell	0755-2661600-602 Ext. 386 dsingh@nitttrbpl.ac.in
4.	Dr. Bashirulla Shaik Member Admission Cell	0755-2661600-602 Ext. 385 bshaik@nitttrbpl.ac.in
5.	Dr. Izhar Ahmad Member Admission Cell	0755-2661600-602 Ext. 384 iahmad@nitttrbpl.ac.in
6.	Dr. Prakash N Hardaha Member Admission Cell	0755-2661600-602 Ext. 434 pnhardaha@nitttrbpl.ac.in